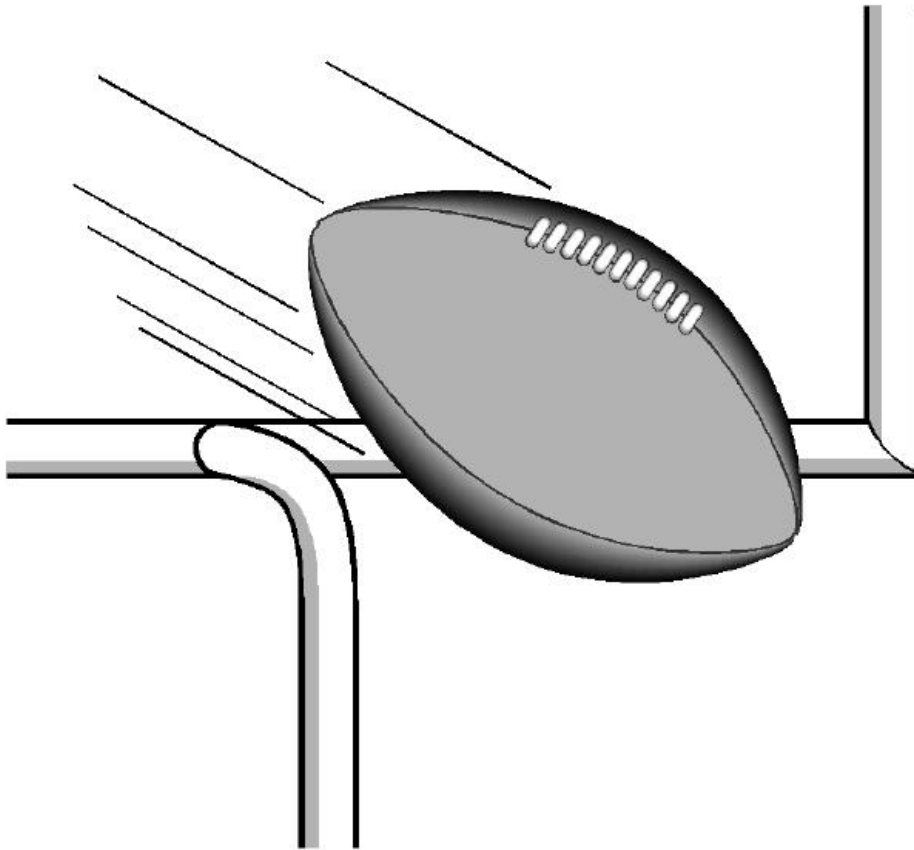


1
2
3
4
5
6
7
8

Jefferson-Shelby
YOUTH FOOTBALL
CONSTITUTIONAL BY-LAWS



9
10

1 **JEFFERSON-SHELBY YOUTH FOOTBALL**
2 **CONSTITUTIONAL BY-LAWS**

3
4 ALL CONSTITUTIONAL BY-LAWS ARE COVERED IN CODE OF ALABAMA 1975
5 VOL. 75 OF TITLE 10. NOT FOR PROFIT CORPORATIONS ARE SUBJECT TO SOME
6 OR ALL OF THE STATUTES OF CODE PERTAINING TO CORPORATIONS,
7 PARTNERSHIPS, AND ASSOCIATIONS.

8
9 OBJECTIVE

10
11 THE OBJECTIVE OF JEFFERSON-SHELBY YOUTH FOOTBALL IS TO PROMOTE
12 YOUTH FOOTBALL AMONG THE YOUTH OF JEFFERSON AND SHELBY COUNTIES
13 AND ANY OTHER INTERESTED PARTIES. A YOUTH, FOR THE PURPOSE OF
14 COMPETING IN THIS ASSOCIATION, IS A PERSON WHO QUALIFIES UNDER THE
15 AGE AND WEIGHT RESTRICTIONS HEREINAFTER DEFINED. AN AMATEUR FOR
16 THE SAME PURPOSE, SHALL BE ONE WHO COMPETES, SOLELY FOR THE
17 PLEASURE AND BENEFITS HE/SHE DERIVES THEREFORE: AND WHO DOES NOT
18 MAKE HIS/HER LIVING PLAYING FOOTBALL OR RECEIVE ANY PORTION OF
19 HIS/HER INCOME FROM SAID SOURCE.

20
21 FOR THE REMAINDER OF THIS DOCUMENT, JEFFERSON-SHELBY YOUTH
22 FOOTBALL WILL BE REFERRED TO AS “JSYF” OR “THE LEAGUE.” ALL YOUTH
23 FOOTBALL ASSOCIATIONS THAT ARE MEMBERS OF JSYF WILL BE REFERRED TO
24 AS “MEMBERS” OR “ MEMBERSHIP”.

1 **SECTION I – GOVERNMENT**

2
3 **A. BOARD OF DIRECTORS**

4
5 1. General Powers, Number, Tenure and Qualifications. The affairs and business of the
6 corporation shall be under the management and control of the Board of Directors “the
7 Board”; which is comprised of an Executive Board and a Member Board. Each Member
8 Park shall appoint a Park Representative to the JSYF Member Board of Directors. The
9 number of Directors shall be at least three (3).. The initial Board of Directors shall
10 consist of five (5) members. The Board shall set the number of Directors for the
11 following year at its annual meeting. The Executive Board shall be elected at each
12 annual meeting of the Board of Directors, held at the time and place herein below
13 prescribed, and shall hold office until the next succeeding annual meeting of the Board
14 of Directors and until their successors are elected and qualified. Vacancies in the
15 Executive Board may be filled by the affirmative vote of a majority of the remaining
16 Directors, though less than a quorum of the Board of Directors. Vacancies in the
17 Executive Board shall be filled only at a special or annual meeting thereof and those
18 chosen to fill vacancies shall hold office for the unexpired term in respect of which such
19 vacancy occurred.
20

21 Meetings, General. Meetings of the Board of Directors, regular or special, may be held
22 either within or without the State of Alabama at such places as the President may from
23 time to time determine and as authorized by the laws of the State of Alabama. However,
24 meetings shall be held at least once per month.
25

26 Annual Meetings. The annual meeting of the Board of Directors may be provided for by
27 resolution of the Board setting the time and place of such meeting. No further notice of
28 any such annual meeting shall be required, but whatever notice as is desires may be
29 given as directed by the President or Resolution of the Board.
30

31 Regular Meetings. Regular meetings of the Board other than its annual meeting, shall be
32 held once each month provided for by resolution of the board setting the time and place
33 of such meeting. No further notice of any such annual meeting shall be required, but
34 whatever notice as is desires may be given as directed by the President or Resolution of
35 the Board.
36

37 Special Meetings. Special meetings of the Board may be called by the President, on two
38 days notice given to each Director by hand delivered letter, mail, telegram, fax, email or
39 by personal communication either over the telephone or otherwise. Special meetings
40 shall be called by the Secretary in like manner and on like notice, on the written request
41 of one-third of the Directors then in office.
42

43 Contents of Notice. Neither the business to be transacted at, nor the purpose of, any
44 regular or special meeting of the Board need be specified in the notice or waiver of
45 notice of any such meeting, but may be so specified at the discretion of the person
46 calling the meeting.

1
2
3
4
5
6
7
8
9
10
11
12
13
14
15
16
17
18
19
20
21
22
23
24
25
26
27
28
29
30
31
32
33
34
35
36
37
38
39
40
41
42
43
44
45
46

Quorum.

- (a) At all meetings of the Board, a majority of the Directors in office shall be necessary and sufficient to constitute a quorum for the transaction of business, and the act of a majority of the Directors present at any meeting at which there is a quorum shall be the act of the Board of Directors, except as may be otherwise specifically provided by statute or by the Articles of Incorporation of the corporation or these Bylaws. If at any meeting of the Board, there shall be less than a quorum present, a majority of those present may adjourn the meeting from time to time until a quorum is obtained and no further notice thereof need be given other than by announcement at the meeting which shall be so adjourned.
- (b) If a quorum is present, when a meeting is convened, the Directors present may continue to do business, taking action by a vote of the requisite proportion of Directors as fixed above, until adjournment, notwithstanding the withdrawal of enough Directors to leave less than a quorum, or the refusal of any Director present to vote.

Reserved Powers. In addition to the powers and authority by these Bylaws expressly conferred on it, the Board may exercise all powers of the corporation and do all such lawful acts and things necessary and lawful to carry out the purposes of the corporation.

Compensation. The Directors of this corporation shall receive no compensation for their services as Directors. They may however, make payments for such clerical assistants and such professional services, as they deem necessary for the conduct of the affairs of the corporation.

Specific Powers and Duties. Without prejudice to the powers conferred by any other provision of these Bylaws, the Articles of Incorporation or law, the Board shall in addition thereto have the following specific powers and duties:

- (a)
 1. All Board members shall enforce League rules concerning good sportsmanship and conduct. These rules include prohibiting the use of alcohol, tobacco, profanity and harassment of players, coaches, and referees.
 2. All Board members shall have a current copy of league rules and have a general knowledge of those rules.
 3. Each Board member shall be willing to help in areas outside their responsibility, when requested to do so by another Board member.
 4. All Board members shall serve as positive ambassadors to the community.
- (b) From time to time make and change rules and regulations consistent with these Bylaws for the management of the property and business of the corporation.
- (c) To purchase or otherwise acquire for the corporation any property, rights and privileges which the corporation is authorized to acquire, at prices or consideration and generally on such terms and conditions as the Board shall think

1 fit; and at its discretion to pay for the same either wholly or partly in money, or
2 other property or the property of the corporation.

3 (d) To sell, lease, exchange, mortgage, pledge or otherwise dispose of any property
4 of the corporation, including disposition of all or substantially all of the property
5 and assets of the corporation if in the usual and regular course of business, for
6 such price or consideration, and generally on such terms and conditions as the
7 Board thinks fit; and at its discretion to accept in whole or partial payment
8 therefore, money, stock or other securities or properties, provided however, that a
9 sale, lease, exchange, mortgage, pledge or other disposition of all or substantially
10 all of the property and assets, with or without good will, of the corporation not
11 made in the usual and regular course of business shall be upon such terms and
12 conditions and such consideration as may be authorized in the manner prescribed
13 by applicable law , as the same may be amended or altered from time to time.

14 (e) To appoint any person or corporation to accept and hold in trust for the
15 corporation any property belonging to the corporation or in which it is interested,
16 or for any other purpose, and to execute all such deeds and instruments and
17 perform such acts as may be requisite in relation to any such trust.
18

19 2. In affairs of JSYF, each Board of Director's member will have one vote in the
20 appropriate matters of affairs of this League with the exception of the President. The
21 President will have one tie-breaking vote only when needed.
22

23 3. The Executive Board shall consist of 1) President, 2) Vice-President, 3) Commissioner,
24 4) Secretary, 5) Treasurer and 6) Championship Director. These positions will be duly
25 elected at the end of each football season. The football season ends at the completion of
26 the championship games.
27

28 4. The length of term of all officers shall be one year after election and all officers will
29 serve until their successors are elected. This will not apply to Park Representatives.
30 Each Member has the responsibility of electing their own Representative from its
31 association to serve on the Board of Directors. The President of JSYF cannot be an
32 acting Representative from any Member park.
33

34 5. Any elected or appointed officer can be removed from a three-fourths (3/4) vote of the
35 JSYF Board of Directors.
36

37 6. No more than one person from any Member is to serve on the Executive Board if
38 possible.
39

40 7. The Membership of the organization shall hold an annual election for the purpose of
41 electing the Executive Board for the following season. The President will appoint a
42 nominating committee and consist of the following members of JSYF: Two (2)
43 current Board members (excluding the President), and three (3) persons not currently
44 on the Board but currently serving on the Board of a Member park. The nomination
45 committee will accept nominations from the committee and floor. The committee's
46 nominations are treated just as if made by Members from the floor with no vote being

1 taken on accepting or endorsing them. Nominations will be closed at the start of the
2 first scheduled championship game unless so changed by JSYF Board. Whenever
3 possible, no Member park should have more than one person on the nominating
4 committee. This committee will meet by October 15th to begin soliciting
5 nominations for each Executive Board position. A complete list of nominees should
6 be available to all Park Representatives by October 31st.

7
8 An election will be held during the week of the championship games or no later than
9 November 15th. Each active Member of JSYF shall have one vote, and Board
10 members will monitor this. If there is no opponent or protest, then all nominees will
11 be considered officer-elect for that position.

12
13 All Membership votes will be counted at halftime of the last game on championship
14 week. The Secretary and President will be present at the vote count but will not count
15 the votes. The ballots will be counted and two (2) non-Board members will initial
16 tally sheets. The Secretary will be responsible for appointing these two (2) non-
17 Board members. The results will be posted immediately following the counting of the
18 ballots providing there is no protest.

19
20
21 **B. DUTIES OF OFFICERS SHALL BE AS FOLLOWS:**

22
23 **PRESIDENT**

24 The President will be voted on by the Members. The President shall preside over the entire
25 JSYF Board. He/She will act as the official representative of JSYF at all times. He/She shall
26 call all meetings, set the agenda and appoint the following standing committees to act when the
27 Board of Directors shall approve necessary and such committees. Membership, Bowl and
28 Trophy, Rules, By-Laws, Scheduling, Protest, and any other Committees he/she deems
29 necessary.

30
31 **SECRETARY**

32 The Secretary will be voted on by the Members. The Secretary shall keep and maintain a
33 complete and permanent record of minutes of all meetings of JSYF. He/She shall appoint all
34 recorders of committee meetings of JSYF and shall act as record of Rules Committee and By-
35 Laws Committee. He/She shall receive reports from treasurer of all moneys collected. A copy
36 of the minutes shall be given out to the Board of Directors at the next scheduled meeting for
37 approval.

38
39 **TREASURER**

40 The Treasurer will be voted on by the Members. He/She shall pay all bills by check and checks
41 must be signed by him/her and on record at the financial institution representing the President of
42 JSYF. The Board of Directors shall be presented a copy of the financial report at each
43 scheduled Board meeting. The Treasurer is responsible to the league for all financial matters
44 concerning league matters. All expenses will be approved by the Board of Directors.

45
46 **VICE-PRESIDENT**

1 The Vice-President will be voted on by the Members. He/She shall preside over any meetings
2 that the President cannot attend and assist the President as needed..

3
4 **COMMISSIONER**

5 The Commissioner will be voted on by the Members. He/She will be from a Member park. The
6 major duty is to act as the chairperson for the scheduling committee. This position needs to be
7 an individual with free time to assist the President in the day-to-day operations of the
8 association. He/She is responsible for league standings.

9
10 **ASSISTANT COMMISSIONER**

11 The Assistant Commissioner will be voted on by the Members. He/She will be from a Member
12 park. The major duty is to assist the Commissioner and the scheduling committee. This
13 position needs to be an individual with free time to assist the President and Commissioner in the
14 day-to-day operations of the association. He/She is also responsible for league standings.

15
16 **CHAMPIONSHIP DIRECTOR**

17 He/She is committee chair for the play-offs and the Championship games. He/She needs to
18 prepare a budget at the beginning of the year on all cost for the Championship games including
19 (officials, trophies, timekeepers, chains, etc.). This proposal needs to be presented to the Board
20 of Directors in August for approval.

21
22 **C. COMMITTEES:**

23
24 Committees are appointed by the President and approved by the Board of Directors and they are
25 responsible for recommendations and changes. They are to present them to the Board of
26 Directors whenever needed.

27
28 **MEMBERSHIP COMMITTEE**

29 The Membership Committee is responsible to provide a systematic way for increasing
30 membership in this association. To urge associations to enroll teams at the earliest date possible
31 of current year.

32
33 **BOWL/TROPHY COMMITTEE**

34 All JSYF committees are directly involved with JSYF Bowl games. The Bowl/Trophy
35 Committee will be in place by September 1, of the current year. Each of these committees will
36 answer to the Board of Directors of their respective duties. A member from the Bowl
37 Committee shall be present at all play-off games to handle any problems that may occur. This
38 attendee must be neutral and cannot be from a park participating in the game. This committee
39 must present three (3) bids for Bowl Game location and three (3) bids for trophies. These
40 recommendations shall come from the committee and be presented to the Board of Directors.
41 The Championship Director will be chairperson of this committee.

42
43 **BY-LAWS COMMITTEE**

44 May be appointed for future years if necessary.

45
46 **RULES COMMITTEE**

47 May be appointed for future years if necessary.

1
2
3
4
5
6
7
8
9
10
11
12
13
14
15
16
17
18
19
20
21
22
23
24
25
26
27
28
29
30
31
32
33
34
35
36
37
38
39
40
41
42
43
44
45
46

PROTEST COMMITTEE

The Protest Committee shall make sure a protest has been written up correctly before it is presented to the Exectutive Board so a decision can be made.

SCHEDULING COMMITTEE

The Scheduling Committee will schedule all games that are played in the league. This committee will maintain control and responsibility of all game schedules throughout the year. No changes can be made without going through the scheduling committee. The Commissioner will act as chairperson for this committee with the assistance of the Assistant Commissioner.

ADVISORY COMMITTEE OF PAST JSYF BOARD MEMBERS

The Advisory Committee of Past JSYF Board Members does not have voting rights. This committee gives input to the new JSYF officers on previous situations that arose in the past and advise on what action was taken.

D. ORDER OF BUSINESS

- Roll Call
- Reading and approval of last meeting’s minutes
- Treasurer’s Report
- Committee Reports
 - a. Vice-President
 - b. Commissioner
 - c. Officials
 - d. By-Laws
 - e. Rules
 - f. Protest
- Discussion of Old Business
- Introduction and Discussion of New Business
- Special Announcements from Members
- General Business
- Agenda for Next Meeting
- Adjournment

E. MEETINGS

- 1 1. The President of JSYF will schedule all meetings pertaining to any business of or for this
2 association
- 3
- 4 2. JSYF Board meetings are to be held at minimum once each month during the regular
5 playing season (August 1 through November 30) and once each month during the off
6 seasons by the Member parks if necessary.
- 7
- 8 3. Each Member is responsible to have a Representative present at each meeting. If the
9 elected Representative is not able to attend, the Member's President/Director may have
10 an alternate attend. The Member's President/Director is at all times welcome and
11 encouraged to attend. **If a Member misses a (one) meeting without a prior notice and
12 a valid excuse a \$50.00 fine will be imposed.**
- 13
- 14 4. All JSYF meetings must have a motion from the floor and a second before a meeting
15 adjourns.
- 16
- 17 5. If an attendee becomes unruly, the JSYF President has the authority to ask the
18 attendee(s) to be dismissed from said meeting. Any dismissed attendee(s) must
19 apologize to the other attendees before admission back to the next scheduled meeting.
20
- 21 6. A quorum shall consist of 51% of the Board of Directors. A quorum is required to be
22 present at regular scheduled meetings. If a special meeting is called, each Member park
23 shall be given two (2) days advance notice to prepare and discuss the special situation.
24
- 25 7. All meetings are closed to outsiders except for Member Presidents/Directors, and their
26 Representatives. Any time a coach from one of the Members has an issue they feel
27 needs to be presented to the Executive Board, they may schedule an appointment to
28 present their case. At no time will matters brought to the JSYF Executive Board, be
29 discussed outside the JSYF meeting. All information concerning a Member should be
30 relayed to their respective Park Board. When conflicts arise between two of the
31 Members, both parties will be given an opportunity to come before the JSYF Executive
32 Board for discussion. After the parties have an opportunity to present their side of the
33 conflict in discussion, they will be asked to leave the meeting.
34

35 *If a conflict resolution needs to be made by the JSYF Board, one will be made at that time.*

36 **F. CONSTITUTIONAL AMENDMENT**

- 37 1. These articles of the JSYF Constitution and By-Laws may be added to or amended by
38 two-thirds (2/3) majority of the Member Board of Directors present at any general
39 meeting of JSYF. Revisions to these articles may be proposed and voted on by the
40 Member Board of Directors between the months of November and May. Any/all
41 revisions will be voted at the next JSYF meeting at least thirty days after the initial
42 proposal. This time frame will allow the Membership an opportunity to review the
43 proposals with the Officers of their Youth Associations. Any additions or revisions to
44 the articles of the JSYF Constitution and By-Laws will become effective at the time of
45
46

- 1 change voted on by the Member Board of Directors. There will be no revisions or
2 additions to the JSYF Constitution or By-laws after the month of May preceding the start
3 of the current year's season.
- 4
- 5 2. All amendments concerning Players, Game Officials, Coaches, League Members or
6 Spectators safety shall be made to the JSYF Constitution and By-Laws only at a regular
7 scheduled meeting. All amendments require two-thirds (2/3) vote of the Member Board
8 of Directors. A quorum of 51% of the Member Board of Directors must be present to
9 even consider the change for safety concerns. If approved by two-third (2/3) vote of the
10 Member Board of Directors, a rule on safety will become effective immediately.
- 11
- 12 3. A quorum will be required to vote on issues of "immediate attention" at any meeting.
13 The Board of Directors will determine "immediate attention".
- 14
- 15 4. All proposed amendments must be written and presented to the prospected committees
16 so they may bring it to the Board of Directors to be voted on in the next regular meeting.
- 17

18 **SECTION II – MEMBERSHIP**

19 **A. PARK MEMBERSHIP**

- 20
- 21
- 22 1. The Membership of JSYF shall consist of players on teams from parks recognized in
23 good standing. Hereinafter defined: "A team shall consist of a group of players
24 organized for the purpose of competing in Jefferson-Shelby Youth Football (JSYF). The
25 Member has paid its said entrance fee on the terms outlined in the Constitution and is
26 certified by the other Members.
- 27
- 28 2. There will be no restriction as to race, sex, color or creed for the purpose of
29 Membership. However, any new organization wishing to participate must be approved.
30 A three-fourth (3/4) vote of the Member Board of Directors is necessary for a new
31 Member to be approved and admitted to JSYF. If approved, Membership will be "at
32 will" and can be revoked without cause with a three-fourth (3/4) vote of the Member
33 Board of Directors. The new Member will be on probation for a period not to extend past
34 two years from the date of approval. During the probationary period, the new park will
35 not be allowed to vote on any issue.
- 36
- 37 3. The entry fee for each Member will be \$600.00. Such fee will be due and payable
38 before February 1 of the current year. If entry fee is not received, the association will
39 not be allowed to participate in the JSYF for the current year. There will be no
40 exceptions to this rule. Designated fees and fines not paid within a fourteen (14) day
41 period from the date of assessment will forfeit voting rights of this association until paid
42 in full. There will be an additional penalty of 20% added every fourteen (14) days,
43 unless waived by the Board of Directors.
- 44
- 45 4. Member registration shall be concluded when the \$600.00 entry fee is paid. The
46 Member shall remain a Member of JSYF for a period of one year at a time. Members

1 shall be renewed each year with the paying of the JSYF dues provided that the
2 concurring park abides by the rules of this association and remaining in good standing.

3
4 5. Any Member’s Representative may be held in “not good standing” with JSYF. If the
5 individual is found not in good standing with JSYF, the affected Member’s
6 President/Director will be notified at the earliest time. The affected Member will, as
7 soon as practical, replace the Representative and notify the Secretary of JSYF.

8
9 6. At the beginning of each year each park will furnish the Secretary of JSYF, a complete
10 list of their parks board including phone numbers

11
12 7. For the mutual protection of all teams entered, to insure fulfillment of schedules and
13 right conduct on the part of players and coaches of all teams no entry fee will be
14 refunded.

15
16 8. In order for a player to be eligible to participate at the Cahaba Valley (Briarwood)
17 Member park, the child must be enrolled in the Briarwood School system for the current
18 year. In addition, a child enrolled at the Oak Mountain Classical School for the current
19 year will also be eligible to participate at the Cahaba Valley (Briarwood) Member park
20 without requiring a release from the Member park in which the player is zoned.

21
22 9. In order for a player to be eligible to participate within the John Carroll Member park, the
23 child must be enrolled in one of the Catholic Diocese Schools of Birmingham in either
24 Jefferson or Shelby County(ask Board for approved list) for the current year.

25
26 **B. FINES AND PENALTIES**

27
28 Any Member or person proven guilty of a violation of the rules of play or Membership will be
29 subject to disciplinary action. Depending on the violation(s), fines, penalties, forfeitures and/or
30 probation will be determined by the Executive Board . If a Member is dismissed from JSYF for
31 any reason and would like to rejoin, all fines must be paid in full and the Member will be on
32 probation for one year.

33
34 **C. REGISTRATION OF TEAMS AND PLAYERS**

35
36 1. Any child wishing to participate in JSYFL must present a birth certificate at time of his/her
37 initial (the first time) certification to prove age. Every year they must also provide proof of
38 residence and a copy of school registration to prove which community they live in and what
39 school they attend. Proof of residence must be in the form of a photo copy of a current utility
40 bill (electricity, natural gas, water) displaying the participant’s and their legal guardian’s current
41 street address. JSYFL will only maintain the records for the current year’s certification records.
42 Proof of residence must comply with the current JSYFL Community Play Rule guidelines.

43
44 2. Participants who have been on a certified roster during the previous season will not be required
45 to provide a birth certificate. If a player has been absent from a JSYFL roster for one or more
46 years then the JSYFL Member park team must provide a photo copy of a valid birth certificate,
47 proof of residence and copy of school registration for school attending. Proof of residence must
48 be in the form of a photo copy of a current utility bill (electricity, natural gas, water) displaying

1 the participant's and their legal guardian's current street address. JSYFL will only maintain the
2 records for the current year's certification records. Proof of residence must comply with the
3 current JSYFL Community Play Rule guidelines.
4

- 5 3. The Board of Directors will set time and date for certification.
- 6
- 7 4. All Members must have the official JSYFL roster form completed for each of their teams at the
8 weigh-in/certification date set by the Board of Directors. If a team shows up without having the
9 form filled out in the proper manner then the team in question will have to wait to be weighed
10 until the form is filled out the way that it is required according to JSYFL rules.
11
- 12 5. Member's teams that add players to their roster at any time must have the player certified. This
13 can only be done with a birth certificate and an official weigh in. Both must be done in the
14 presence of a JSYFL Officer or a Park Representative that is not associated with the player that
15 is being certified.
16

17 Exceptions to the rule above: A player that was written or typed on a specific teams' roster at the official
18 JSYFL Certification, but was not certified because he/she was over their teams' maximum weight for the
19 division at the weigh in will not be eligible to be added for that team. This player will only be eligible to
20 move to a team in a higher weight division for their Home Park before the start of the season. The player
21 can also be added after the start of the season provided that there is an available team in that division that
22 has fewer than 22 players on their roster.
23

24
25 The Commissioner should initial the certificate and sign the back of the roster with his name, Member
26 and the date. He then will notify the other Board of Directors at the next JSYF meeting or by e-mail or
27 fax communication.
28

29 6. No player will be added to a roster that has 22 or more players after final certification unless a
30 family has just moved into the area. At such time the family will have to show proof where they have
31 just moved in and the park must submit in writing the request for the child to play and it must be
32 approved by the Board of Directors. This must be completed and the player must be certified on the
33 roster before the player can participate in any league sponsored contest. No player will be added to a
34 roster with 22 or more players once a team has past the halfway point of the season. Players may be
35 added to a roster with less than 22 players all the way through the week of the last regular season game.
36 **ALL PLAYERS ADDED TO ANY JSYFL ROSTER PAST FINAL CERTIFICATION WEIGH-IN**
37 **DATE MUST BE CERTIFIED ON THE ROSTER BY A MEMBER FROM ANOTHER PARK**
38 **OTHER THAN THE PARK WHERE THE NEW PLAYER WILL BE PLAYING.**
39

40 Ex: 22 players on the roster and the team is getting ready to play their 5th game of the season they CAN
41 NOT ADD ANY ADDITIONAL PLAYERS. However, same team has 2 players move away in two
42 weeks and falls down to 20, at that point they can add up to 2 players up until the last regular season
43 game.
44

45 7. Certification shall be accomplished by the Board of Directors and they will have the final
46 approval.
47

48
49 8. Any exceptions to player certification must have the approval of the Board of Directors
50

1 9. Each team is required to have an announcement roster for every game of the season showing
2 player name and jersey number.

3
4 10. Each Member Park will submit preliminary team registration numbers at June’s meeting and
5 then each member park will submit the final number of teams per weight class within each park to the
6 league at least one week prior to the scheduled July meeting so that the schedule can be finished prior to
7 certification.

8 11. If 51 or more players have registered to play for a given grade, the member park must
9 split the players into two teams. Member parks can choose to split their teams before 51 players if
10 they choose to do so. A member park will have to form a third team if the registration numbers for a
11 specific grade reach 81. Parks will split every 25 players after the third team is formed. The method
12 in which the member parks split their teams will be according to the member parks bylaws. This
13 method must be noted when submitting a team for consideration of their division placement.

14 **(Adopted May 31,-2023)**

15 12. Each Park is required to outfit their teams in the same uniform. This means each
16 team should have the same color of football pants and the same color and style of jersey. The
17 parks need to have a home and away jersey when possible. If a park cannot afford two jerseys
18 then that park needs to notify the JSYFL Board of Directors as soon as possible. Unless
19 otherwise approved the Member Park must choose jersey colors from the list below of approved
20 colors to their Park.

- 21
22 Cahaba Valley- Navy Blue, White and Gold
23 Chelsea- Royal Blue, White and Black
24 Gardendale- Maroon, White and Gray
25 Helena- Black, White and Columbia Blue
26 Homewood- Red, White and Blue
27 Hoover- Orange, Black and Graphite
28 Oak Mountain- Navy Blue, Red and White
29 Pelham- Green, Gray and White
30 Spain Park- Columbia Blue, Black and White
31 Thompson- Red, Black and Silver
32 Trussville- Red, White and Black
33 Vestavia- Royal Blue, Red and White

34
35 A Park may request to outfit their entire park in a different color jersey than the ones approved
36 above, but they cannot request to outfit a portion of their park in a different color.

37 **(Adopted May 31, 2023)**

38
39
40 ***The penalty of failure of providing an announcement roster could result in a***
41 ***forfeiture of the game as determined by the Board of Directors***

42
43 **D. OFFICIAL WEIGH-IN**

44
45 JSYFL works under the mandatory weigh-in policy prior to the first week of the season.

46

1 1. The Board of Directors is required to have accurate medical scales and a certified 50 lb weight at
2 the weigh-in site. These scales should be in good condition and be able to be calibrated periodically
3 throughout weigh-in.

4
5
6 2. Official weigh-in will take place on the third (3rd) or fourth (4th) Saturday in August prior to the
7 start of the current season at a time and location to be established by the JSYFL Board.

8
9 3. Each player will be allowed to weigh-in one (1) time, without exception. The player, their
10 parent/guardian and/or coach will determine what attire each individual player will wear for weigh-
11 in in advance of the player stepping onto the scales. The player must wear, at a minimum,
12 appropriate athletic shorts and if the player is female, an appropriate T-shirt. JSYFL ignores all
13 digits to the right of the decimal on a digital scale. This in effect gives each player a 15-ounce
14 clothing allowance.

15
16 4. There is to be **NO** weight loss measures (running, jogging, exercising, drugs etc.) taken at time of
17 certification or at the certification site. Anyone doing so will be asked to leave the premises.
18 Coaches conducting such activity at certification site will face disciplinary action from the JSYFL
19 Board. The JSYFL Board will not condone, authorize, nor encourage the use of drugs, starvation
20 diets, are any other immediate weight loss gimmick.

21
22
23 5. Any player who does not complete the weigh-in/certification process will not be allowed to
24 participate in any JSYFL sponsored game/event.

25 6. The JSYFL Board reserves the right to establish an additional date to weigh-in for participants
26 with "special circumstances". The date and requirements to qualify as "special circumstances" for
27 this additional weigh-in will be communicated to Member parks by the Board prior to the start of the
28 official weigh-in set out above.

29
30 7. A Member's Representative and coach and one weigh-in witness from another park will conduct
31 official weigh-in. If it has not been approved previously, all others will not be allowed in the weigh-
32 in area.

33
34 8. Once a child weighs in and makes weight, he/she may not be asked or forced to weigh in again.

35
36 9. Each team will fill out the official JSYFL roster form in the order and format that it is specified
37 by JSYFL and have it to present at the table when they reach weigh-in or they will have to move to
38 the side and wait until they have a computer generated copy of the roster to present.

39
40 10. Each team is responsible for having their official JSYFL certified team roster present at games. If
41 there is any question about a player's eligibility (roster wise) to play the game, contact your
42 Member's Representative. If it is determined by the JSYF Executive Board that an ineligible player
43 has participated, the team he/she played on will automatically forfeit all of the effected games.

44
45 ***Failure to adhere to the JSYFL weigh in procedures will result in the player being declared***
46 ***ineligible for the entire season***

1 **E. COMPOSITION OF DIVISIONS**

2
3 1. Each Member must have at least one team in three different divisions (exceptions need
4 Board of Director’s approval).

5
6
7 2. .
8 If a division has 10 or more teams, then JSYFL may divide the teams into two conferences.

- 9 a. These Conferences will be called National and American.
- 10 b. The divisions will be split according to the following factors.
 - 11 i. If this is the first year a Member Park has a team in that Grade Level
 - 12 ii. The teams record from the Previous season if a returning team.
 - 13 iii. Is this a second team from a member park and how many returning players
 - 14 are on the roster.
- 15 c. A Member Park does not have to field a team in the National Conference unless the
- 16 final record for that Member Parks team had them finish in the top half of the
- 17 league the previous season.
- 18 d. The Divisions will change from year to year based off records. All playoff rankings
- 19 will be based on a team’s record within their conference. Any games played against
- 20 teams from the other conference, if needed, will be classified as non-conference
- 21 games, and will not count when factoring playoff seeding.
- 22 e. Member parks must submit teams and request a division. The following criteria
- 23 must be included when submitting a team to the JSYFL board.
 - 24 i. Returning team or 1st year team
 - 25 ii. How many returning players
 - 26 iii. If teams were split to form this team, how were the teams chosen.
 - 27 1. 1 to 1 draft
 - 28 2. Protected players (if so, how many)

29 **(Adopted May 31, 2023)**

30
31
32 3. The various divisions will be formed as follows

- 33 1.
- 34
- 35 4. 1st & 2nd Grade- Rookie 1 – Teams for players who are in 1st and 2nd Grade and are 6-8 years
- 36 old. Players cannot be 9 years old before December 31st of the current year. All Players
- 37 must be in 1st or 2nd Grade or may be in Kindergarten if they turn 6 before August 1st of the
- 38 current year. Players must weigh-in at 80.9 lbs or less to be considered an “Unrestricted
- 39 Player”. All players weighing 81lbs. or more will be considered a “Restricted Player” (see
- 40 **Restricted Player rules**). **There will be an 4 play minimum play rule for this division.**
- 41 **(Adopted May 31, 2021)**

- 1 5. **3rd Grade- Junior 1-** Teams for players who are in 3rd Grade. Players cannot be 10 years
2 old before December 31st of the current year. All Players must be in 3rd Grade or lower
3 in the fall of the current year. Players must weigh-in at 90.9 lbs or less to be considered
4 an “Unrestricted Player”. All players weighing 91lbs. or more will be considered a
5 “Restricted Player” (see Restricted Player rules). **There will be a 4 play minimum play**
6 **rule for this division.(Adopted May 31, 2021)**
7
- 8 6. **4th Grade- Junior 2-** Teams for players who are in 4th Grade. Players cannot be 11 years
9 old before December 31st of the current year. All Players must be in 4th Grade or lower
10 in the fall of the current year. Players must weigh-in at 105.9 lbs or less to be considered
11 an “Unrestricted Player”. All players weighing 106lbs. or more will be considered a
12 “Restricted Player” (see Restricted Player rules). **There will be a 4 play minimum play**
13 **rule for this division.(Adopted May 31, 2021)**
14
- 15 7. **5th Grade- Senior 1-** Teams for players who are in 5th Grade. Players cannot be 12 years
16 old before December 31st of the current year. All Players must be in 5th Grade or lower
17 in the fall of the current year. Players must weigh-in at 120.9 lbs or less to be considered
18 an “Unrestricted Player”. All players weighing 121lbs. or more will be considered a
19 “Restricted Player” (see Restricted Player rules). **There will be a 4 play minimum play**
20 **rule for this division. .(Adopted May 31, 2021)**
21
- 22 8. **6th Grade- Senior 2-** Teams for players who are in 6th Grade. Players cannot be 13 years
23 old before August 1st of the current year(**Adopted May 31, 2023**). All players must be in
24 6th Grade or lower in the fall of the current year. Players must weigh-in at 135.9 lbs or
25 less to be considered 29 an “Unrestricted Player”. All players weighing 136lbs. or more
26 will be considered a “Restricted Player” (see Restricted Player rules). There will be a 4
27 play minimum play rule in this division. .(Adopted May 31, 2021)
28
29
30

31 **9. Once playoffs start there will be NO minimum play rule for** 32 **any division.**

33 10. RESTRICTED PLAYER RULES

- 34 11. “Restricted Players” must play on the offensive or defensive line. On the offensive line
35 they must play Center, Guard or Tackle they are not eligible to receive or run the ball but
36 do NOT have to be covered up. On the Defensive line a dot player must play no wider
37 than a “5” technique(outside shoulder of the second player from center) against a normal
38 offensive line alignment. A defensive dot player may line up in the following way
39 against an overloaded offensive line a “5” technique on one side and a “9” technique on
40 the other side. This means outside shoulder of the second player from center on the short
41 side and outside shoulder of the third lineman from the center on the four man side of the
42 center. Offensive Dot players can play in a 2, 3 or 4 point stance. All defensive dot
43 players must be in a down position this means a 3 or 4 point stance. Dot Players can kick
44 extra points and field goals but they can NEVER advance the ball **unless the player is**
45
46

1 playing defense and intercepts a pass or recovers a fumble and at that time the DOT
2 player can advance the ball(Adopted May 31, 2021) and they may NOT play on kickoff
3 or kickoff return unless approved by the JSYFL member parks.
4
5

6 12. “Restricted” players will have a yellow dot located on the back of the helmet and will be
7 notated on the official roster for easy identification.
8

9 13. If any player certified as a “Restricted Player” is found to have participated in a game at
10 a position outside of the “tackle to tackle” designation or does not meet one of the above
11 rules, this will be considered a violation that will result in a forfeiture of any and all
12 games where the violation occurred. In addition to forfeiture of games there may also be
13 a monetary penalty assessed to the Park whose team violates “Restricted Player Rules”.
14

15 14. NO player may play up a grade level unless their member park does not have a team for
16 their grade level or unless special circumstances exist. Any player wanting to move up
17 must have their park request the JSYFL Board of Directors for approval and must be
18 accompanied by a letter from the parents requesting to move up.
19

20 15. In all divisions, no player will be eligible who is in 7th grade or higher classification for
21 the current year.
22

23 SECTION III – GOVERNING RULES 24

25 A. BALL ADOPTION 26

27
28 1. A Wilson K2 –18” circumference football or equal suitable substitution will be the
29 authorized football for the Junior Teams (JR 1-2-3). Any park wishing to use a ball
30 other than the Wilson K2 must have the substitute ball approved by the JSYF Board
31 prior to the beginning of the current playing season (August 1st).
32

33 2. A Wilson TDJ or equal suitable substitution will be the only authorized football for the
34 Senior Teams (SR 1-2-3). Any park wishing to use a ball other than the Wilson TDJ
35 must have the substitute ball approved by the JSYF Board prior to the beginning of the
36 current playing season (August 1st).
37

38 B. EQUIPMENT 39

40 1. Fundamental equipment is the responsibility of the Members. JSYF encourages all
41 Members to provide each player with the safest equipment available. The game officials
42 can stop a player from playing any time for unsafe equipment.
43

44 2. All team jerseys must be numbered front and back. Scheduling Committee should
45 review each team color and notify each team if there is a conflict apparent. Any

- 1 Member buying new jerseys of a different color than the previous must obtain Board
- 2 approval
- 3
- 4 3. Tennis shoes or athletic shoes with molded cleats or rubber may be used. No detachable
- 5 cleats of any kind may be used. No metal cleats are permitted.
- 6
- 7 4. ALL mouthpieces will be attached to helmet, except for orthodontic mouthpieces for
- 8 kids with braces.
- 9
- 10 5. Use of electric devices shall not be allowed between spotters or any anyone on the field.
- 11 Electrical devices including cell phone, two way radios and head sets. Electrical devices
- 12 do not include digital beepers. A violation of this rule could result in an automatic
- 13 forfeiture of the game in question.
- 14
- 15 6. Games may be filmed only if the Home Team allows. Permission to film a game by the
- 16 Visiting Team participating in the contest should not be unreasonably held by the Home
- 17 Team.
- 18
- 19 JSYF scheduled games, regular season or playoff, may not be filmed by coaches, family
- 20 members, or players of non-game participants. During the current football season, if a
- 21 coach, family member, or player of a team from a Member park or from a team that is
- 22 not participating in the game violates this rule, the Member park will be fined \$500.00
- 23 and the Head Coach of the team will be suspended for his/her next game. The Head
- 24 Coach of the offending team will not be allowed to return to the sideline as a coach for
- 25 any team in JSYF league scheduled game until the fine is paid by the Member park.
- 26 This would also run concurrent with future JSYF football seasons.
- 27

28 **C. GOVERNING RULES OF PLAY:**

29

30 Games are governed by the official football rules of the Alabama State High School Athletic

31 Association and rules and regulation set forth in this Constitution and By-Laws with the exception

32 of the following:

- 33
- 34 1. There will be only seven (7) coaches on the field at any time. A medical person is included in the
- 35 7.
- 36
- 37
- 38 2. During an official called water break, the coach can go to the team to make sure all players get
- 39 water. The maximum number of coaches on the field at any time is two (2).
- 40
- 41 3. During game time outs, coaches may pull teams to the numbers. During a game time out, the
- 42 players are not allowed to go off the field. If so, this is considered an illegal substitution. During a
- 43 game time out, more than one coach is allowed to talk to the players. During a game time out only
- 44 two (2) coaches are allowed to go onto the field to talk with the players. After the whistle is blown,
- 45 teams have 25 seconds to put the ball back in play.
- 46
- 47 4. JSYFL has a minimum play rule in effect starting with the 2014 season. Minimum play will only
- 48 be in effect for the regular season and will be handled the following way players in all grades are

1 required to get 4 plays per game. Every coach must keep a play chart showing each player was in the
2 game the required number of plays. If a player misses practice unexcused then the coach is not
3 required to meet the MPR(minimum play rule) for that player during the week in which the player
4 missed practice as long as the Coach as made his Park aware of the situation. Any coach found
5 hiding a player or in any other way making his/her players unavailable will be disciplined by the
6 JSYFL executive board.

7 Discipline will be as follows:

- 8 A. First offense happens before the 5th week of the season and the Head Coach will
9 be warned and will be put on probation. First offense happens during the 5th
10 week or after and coach will be suspended for 1 full game and put on probation.
- 11 B. Second offense during the same season and the Head coach will be suspended
12 for the remainder of the regular season and any playoff or Championship Games.
- 13 C. If a coach is reinstated the following season and commits another offense then
14 he/she will be suspended from JSYFL indefinitely.

15
16
17 5. The Game Referees will be responsible for:

- 18
- 19 a) Checking the game ball to see if they conform to the JSYF football rules.
- 20 b) To turn into the Executive Board the name of any coach showing
21 unsportsmanlike conduct.
- 22 c) To be conversant of all rules of play and the rules of JSYF.
- 23 d) Turn into the Executive Board the names of any coaches or players ejected from
24 game and reasons

25
26 6. Games are not officially over until all 4 full quarters are played unless both head coach's
27 agree otherwise.

28
29 7. All games that are cancelled or postponed for any reason must be played within that week at
30 least by Sunday. Failure to reschedule during this time frame could result in a forfeit for both
31 teams. All teams must play all of their games. The only exception to move a game to a later
32 date is for school activities. A school activity must be documented in writing by the school
33 and presented to the Board of Directors. Games postponed due to inclement weather should
34 be made up as soon as possible. There will be no exception to this rule. If there is a problem
35 with any of these rules, they will be addressed to the Board of Directors.

36
37
38 8. Overtime will be in effect for all games but will not exceed 2 overtime periods with teams
39 having to go for 2 points in the second overtime period.

40
41 9. Game officials **MAY** make time available to answer questions from the head coach as
42 long as the coach maintains his/her composure and tone of voice.

43
44 10. A one (1)-point conversion from the two (2) yard line will be used, if run or passed.

45
46 11. A two (2) point conversion from the four (4) yard line will be used, if run or passed
47

- 1 12. A two (2) point conversion will be awarded from a kick with the ball being snapped from the
2 two (2) yard line
3
- 4 13. A team cannot break a huddle with more than 11 people.
5
- 6 14. The center is allowed to snap the ball either straight or sideways as long as it is done
7 between the legs.
8
9
- 10 15. All Kindergarten-4th grade games cannot have a nose tackle. And NO PLAYER may line up
11 within 2 yards of the center or inside the offensive guard. As long as the defensive player
12 has his/her hand on the ground and their helmet is within the shoulder pads of the offensive
13 guard then the player is legal. This means you may not line up in the center/guard gap, with
14 the guard having a maximum split of 1 foot. This rule is for the safety of the young centers.
15 If a team lines up within this zone or if a player does not have his/her hand on the ground,
16 then the play will be blown dead and the referee will warn the offending team's player and
17 coach. A subsequent violation will result in the play being blown dead and a 5 yard illegal
18 procedure penalty will be assessed on the defensive.
19
- 20 16. No player in any weight class may jump over the center.
21
22
- 23 17. Initial hit may not be to the head or with the head on offense or defense in any weight class
24 by any player. This will result in a personal foul penalty being assessed. If any player
25 commits multiple violations for this in a game and in the referees opinion any are considered
26 targeting, then the referee shall inform the offending player's and remove the player from
27 the game for at least 1 play. After the game the head of officials and JSYFL President shall
28 be notified of the infraction as soon as possible.
29
30
- 31 18. All 5th and 6th grade games are allowed to have a nose tackle; however, they must play down
32 in a 3-point stance or a 4-point stance and may not stand up over the Center for a distance of
33 1 yard. If any player is in a standing position directly over the center, the play will be blown
34 dead and will result in a 5 yard illegal procedure penalty.
35
36
- 37 19. No defensive player may stand up on the line of scrimmage between the tackles at any point
38 during any game. Any player standing up must be behind the imaginary line that goes
39 directly behind the Defensive Lineman
40
- 41 20. Holding will be a 5 yard penalty.If it occurs in the backfield then it will be enforced from the
42 line of scrimmage if it occurs beyond the line of scrimmage then it will be enforced from the
43 spot of the foul.
44
45
- 46 21. No player may engage another player at or below the knee at any point nor can they
47 intentionally fall to the ground or perform any other kind of non-football move. First

1 infraction will be warning to the offending team. Every infraction after that point will be
2 considered unsportsmanlike and will be a 10-yard penalty. (Adopted May 31, 2019)

- 3
4
- 5 22. Offensive lineman will not be allowed to move their FEET once they are in a set 2-point
6 stance. They will not be allowed to move at all once they are in a set 3-point or 4-point
7 stance. If a lineman commits either of these infractions then it will result in a 5 yard illegal
8 procedure penalty.
9
- 10 23. If there is a point difference at any time of 24 points, the time clock will go “hot” and stay
11 hot for the remainder of the game, regardless if a team cuts the deficit to less than 24 points.
12 If the point difference reaches 21 points at Halftime, then the time clock will go “hot” and
13 stay hot. Hot Clock will stop for time outs and injury only.
14
- 15 24. **On an Incomplete Pass the Game clock will stop until the Ref signals the ball is ready**
16 **for the next play. And the game clock will start with the play clock. The game clock will**
17 **not start until the snap of the ball within the last two minutes of either half. (Adopted**
18 **May 31, 2021)**
19
20
21

22 D. PENALTIES

- 23
- 24 1. No penalty will be more than Five (5) or Ten (10) yards will be observed on the 80 yard
25 field.
26
- 27 2. All penalties are in accordance with the Alabama High School Athletic Association.
28 Penalty Enforcement will be as follows: Offensive Penalty at or behind the line of
29 scrimmage will be enforced from the line of scrimmage. Offensive Penalty beyond the
30 line of scrimmage will be enforced from the spot of the penalty. (Adopted May 31,
31 2023)
32

33 E. PROCEDURE AND PLAY

- 34
- 35 1. The Scheduling Committee will establish a schedule that will consist of no more than
36 eight (8) regular season games for each team in each division. The Committee should
37 schedule all regular season games so that Member parks have equal numbers of games
38 played in their home park to those considered away games. In creating the schedule, the
39 Committee will take into consideration the number of teams a specific Member park will
40 have in each division, home field availability, and potential black out dates each of
41 which may impact the ability to keep home and away games equal.
42

43 The Committee may have to insert the tiebreaker game or the three-way
44 tiebreaker scenario immediately after the regular season has concluded to determine
45 those teams that will advance to the playoffs.
46

- 1 At the conclusion of the regular season, there will be one play-off round game and one
2 championship game per division.
3
- 4 2. All games will be played on fields specified by the schedule committee and approved by
5 the Board of Directors.
6
- 7 3. All teams will play on 80 yard long the width of the field can be no smaller then 40-
8 yards(120FT) wide and no bigger than 53 1/3 Yards(160FT). A regulation length field may
9 be used if approved by the JSYFL Executive Board.
10
- 11 4. There will be no obstruction within 10 feet of the sideline or end zones, preferable all
12 games will be played in an enclosed park.
13
- 14 5. All parks will have goal post in regular season and post season play. If a park does not,
15 they will not have any home games without approval of the Board of Directors.
16
- 17 6. Teams will be scheduled in their or their opponent's park. For home games, a nominal
18 admission fee may be charged, not to exceed \$5.00 for adults, \$2.00 for children (under
19 12). This charge is not applicable for persons in possession of an official JSYFL Pass.
20 JSYFL PASSES are NON-TRANSFERRABLE AND ONLY GOOD TO THE PERSON
21 THEY ARE ISSUED TO FOR THE SEASON. (Adopted May 31, 2019)
22
- 23 7. All parks are responsible for a player's box from the 30-yard line to the 30-yard line for
24 each team's players. No player will be allowed past the 30-yard line on the sideline. All
25 players must remain in this box during the game.
26
- 27 8. All parks are responsible for coach's box from the 20-yard line to the 20-yard line for
28 the coaches. This box should be located in front of the player's box.
29
- 30 9. There will be only seven (7) coaches on the field at any time. A medical person and the
31 Head Coach are include in the seven (7) coaches number.
32
- 33 10. Two (2) offense and two (2) defense coaches can be on the field with the 1st and 2nd
34 Grade players with one coach solely responsible for getting the line lined up. Once the
35 line is lined up correctly then that coach will move back out of the way. If the second
36 coach is not getting the lineman aligned properly then he will need to leave the field of
37 play and stand on the sideline. If a coach (either offense or defense) is on the field
38 coaching after the play has started, he/she will be warned one (1) time. After the next
39 time, he/she will automatically be removed from the field and be replaced with another
40 coach.(Adopted May 31, 2021)
41
- 42 11. If any Coach, head or assistant, is ejected from a game they must immediately cease to
43 participate in the game, and leave the football complex.
44
- 45 12.
46 13. Ejected coaches will automatically forfeit their right to participate in the next league
game with the possibility of further suspension depending on why the ejection occurred.

1 Any coach who continues to be argumentative, or threatens another league
2 representative or official after being ejected, will face automatic suspension from the
3 league. Suspended coaches can only be reinstated with majority approval by the
4 Executive Board.

5 14. The head coach is at all times responsible for the actions of his/her players, coaches and
6 fans and may be disciplined by the league for any unsportsmanlike conduct that his/her
7 team may cause.

8 15. Coaches, parents, players and anyone else using profanity or showing threatening actions
9 before, during or after any league function will be suspended by the Executive Board.
10 Anyone involved in an altercation of physical violence will be placed in “not good
11 standing” with JSYFL and not allowed in or around any Member’s park.

12
13

14 16. There is no excuse for anyone making a threat or threats. JSYFL will not tolerate this
15 behavior.

16

17 17. Player Ejections

18

19 First offense

20 A player ejected in the 1st half of a game would be required to sit out the 2nd half
21 of the current game, plus the 1st half of the next league game. A player ejected in
22 the 2nd half of the game would be required to sit out the next league game (both
23 halves). The player’s suspension may be extended if the player is ejected for any
24 form of fighting (throwing a punch, kicking or anything else).

25

26 Second offense

27 The penalty for a second ejection during one season will be forfeiture of
28 participation in the current game, plus the next 2 full games (both halves). If the
29 player is ejected for a second time for any form of fighting then the player may
30 be dismissed from the league.

31

32 Head Coaches must report any ejection (player, coach or parent) to his/her park
33 and to the President of JSYFL within 24 Hours of the ejection. If the Head Coach
34 fails to report the ejection, then the Head Coach will face immediate suspension
35 from the league.

36

37 Any additional ejections, for any reason, will be grounds for immediate dismissal
38 from the league.

39

40 Any protest regarding ejections will be considered by the Executive Board.

41

42 18. The play clock for the K/1, 2nd and 3rd Grade divisions is 35 seconds. The play clock for
43 the 4th, 5th and 6th Grade divisions is 25 seconds.

44

45 **F. KICKING**

46

47 Kick-Offs

- 1
- 2 1. Effective with the 2018 Season all divisions will begin the first possession of each half
- 3 and every possession after a score with the ball being spotted on the 25-yard line, with
- 4 the exception of a “safety”. The team receiving the football after a “safety” will receive
- 5 the ball on their 35-yard line.(adopted 9/16/2018)
- 6
- 7 2. **Beginning with the 2021 Season. If a team is trailing in the 4th Quarter by 14 points or**
- 8 **less after they have scored, then the team trailing may elect to try and convert a 4th and**
- 9 **10 play from their own 30-yard line in place of an Onside Kick. There will be one play**
- 10 **with neither team able to score. If the team with possession gets past the 40 yard line**
- 11 **then the play will be blown dead and they will have it 1st and 10 from the 40 yard line**
- 12 **starting a new possession. If they do not get the first down then the defensive team will**
- 13 **take over 1st and 10 on the 40 yard line. (Adopted May 31, 2021)**
- 14

15

16

17 Punting

18

- 19 1. Punts in all divisions will be a walk off of 30 yards anywhere on the field; however,
- 20 walk off will never take the ball deeper than the 10-yard line. Example: If you call for a
- 21 punt when you are on the opponent’s 30 yard line you will only get a 20 yard walk off to
- 22 their 10 yard line. (adopted 9/16/2018)
- 23
- 24 2. At the moment a team declares “punt”; in order to simulate the punt play, 10 seconds
- 25 shall run off of the clock and the clock will not restart until the next snap of the ball.
- 26

27 Extrta-Points/Field Goals

28

- 29 1. **Kicking PAT’s with no rush--- Field Goals. – If the snap goes over the holders head or if**
- 30 **the holder drops the ball the play is dead. There will not be any fake PAT’s or Field**
- 31 **Goals (Adopted May 31, 2021)**
- 32

33

34 G. GAME TIME

35

- 36 1. All teams entering this association must play at the time and place scheduled by the
- 37 scheduling committee.
- 38
- 39 2. Games will be played on Monday, Tuesday and Thursday nights starting at 6:00p.m. and
- 40 7:15 p.m. Rained out games will be played at the time and place scheduled as soon as
- 41 possible, to be decided by the home park representative with approval of commissioner.
- 42 All single games will be played at 6:30 p.m. All Jamboree games will be played after
- 43 3:00 pm to avoid heat related injuries to players.
- 44
- 45 3. Teams scheduled for a game must be ready to play at the scheduled time. This includes
- 46 dressing and warming up.

- 1
- 2 4. All Divisions within JSYFL will play 8-minute quarters by the clock (stop clock). Clock will
- 3 be kept in accordance with the Alabama High School Football Rules. If no timekeeper is
- 4 available then the game officials will keep the official time on the field, however the home
- 5 park will have someone work in the press box to work the scoreboard. Time between halves
- 6 will be 10 minutes, there will not be a set time between games but no game can start ahead
- 7 of the scheduled time unless both coaches agree to start earlier.
- 8
- 9 5. The Game officials have the option only to delay a game. If lightning occurs before the
- 10 first scheduled game, there will be a 30-minute waiting period from the original start
- 11 time before the game may be postponed. If lightning occurs before the second scheduled
- 12 game, there will be a 30-minute waiting period from the original start time or end of the
- 13 first game before the game may be postponed. The home field Member's
- 14 President/Director or Representative or JSYF Representative plus a coach must agree to
- 15 call off the game. The Home field President/Director or Vice President/Assistant
- 16 Director can stop or postpone a game due to inclement weather to preserve the playing
- 17 surface at any time.
- 18
- 19 6. If a game must be stopped during play for any reason it must be restarted where it was
- 20 stopped. The official scorekeeper just takes record of: score, time remaining, quarter,
- 21 where the ball is marked, what down and who has possession of the ball.
- 22
- 23 7. League games will take precedence. Teams in JSYF shall be allowed to play outside
- 24 this League; at no time will non-League games interfere with JSYF functions or play.
- 25 (This includes pre-season and post-season play.)
- 26

27 **H. PARKS**

- 28
- 29 1. JSYF will not dictate to the individual parks on how to run their programs, as long as
- 30 they abide by the rules of this constitution and by-laws of JSYF.
- 31
- 32 2. Any park talking to or considering talking to another league will have the courtesy of
- 33 notifying the President of JSYF as soon as possible.
- 34
- 35 3. JSYF plays under the rules of the AHSAA. Within these rules are sub rules that each
- 36 Member has to abide by.
- 37
- 38 4. All parks will allow the Member parks to enter their park for unstated reasons. (This
- 39 includes any member of the Executive Board.)
- 40

41 **I. COMMUNITY PLAY RULE**

- 42 1. In community play, the public high school zone in which the player resides or the private
- 43 school in which the player attends will define the Member park community.
- 44
- 45 2. All players must play for the member park community in which they reside or for the private
- 46 school that they attend. No longer will players be given releases to play for any other
- 47 member park. If a player lives outside of JSYFL communities and does not attend a private

- 1 school that has obtained membership within JSYFL then they will not be allowed to play
2 within JSYFL.
3
- 4 3. Players who attend one of the private school Member Parks must play for the private school
5 they attend. The following exceptions to this rule are as follows.
6
- 7 A. If a player lives within the city limits of one of the JSYFL cities then the player will have the right to
8 play for either the private school program or the program for the city where they live. The cities that
9 the player may live in and play for are Alabaster, Chelsea, Helena, Homewood, Hoover, Pelham or
10 Vestavia.
- 11 B. If a Player lives within any unincorporated area but still may attend a school system within JSYFL
12 communities then they can play for that program as long as they obtain a release from the private
13 school member park that they attend.
- 14 C. Any child attending Westminster may choose to play for Cahaba Valley youth football
15 or the JSYFL community that they reside within.
- 16 D. Any child enrolled in the PSR program within the local Catholic churches is afforded the
17 right to play for the Jr Cavaliers Youth Program. Paperwork providing enrollment must
18 be presented at certification.
19
- 20 4. If one Member Park community serves 2 or more high schools then the players within that
21 park MUST be placed on teams according to which high school they are zoned to attend.
22 There will be no exceptions to this rule.
23
24
- 25 5. It is the total responsibility of each Member Park to make sure all players are legal and
26 conform to the community play rule. If a child is caught playing out of his community then
27 all games previously played for that team will be forfeited by that team.
28
- 29 6. All players in JSYFL must live within JSYFL school zones or live within the city limits of
30 Alabaster, Chelsea, Helena, Homewood, Hoover, Pelham or Vestavia. Players can also
31 participate in JSYFL if they attend any school zoned for the high schools in JSYFL
32 communities. Those High Schools are as follows: Briarwood, Chelsea, Helena, Homewood,
33 Hoover, John Carroll, Oak Mountain, Pelham, Spain Park, Thompson, and Vestavia.
34
- 35 7. The Executive Board will resolve any dispute regarding any of the above Community Play
36 Rules. The Executive Board decision on the matter will be final.
37

38 ***Any Members found recruiting from another Member's area can and will be found "Not in good***
39 ***standing with JSYFL." This problem has been the downfall of many outstanding associations.***
40

41

42 **J. PRACTICE GUIDELINES**

43

44 For the following Practice Guidelines a week will be from Sunday through the following
45 Saturday.
46

- 47 1. No practice with any pads will start any sooner than a date set each year by the Board of
48 Directors. Prior to the start of the JSYF season each team will have a total of 22 practice days.
49 Prior to the start of the regular season, a team can only practice for a total of 10 hours per week
50 maximum.

1
2 2. After the regular football season starts, a team’s week of practice cannot be more than 8 hours
3 when not playing a game and only 6 hours when playing a game.
4

5 3. If the heat index is between 100F- 105F then water breaks should be given every 15-20
6 minutes and no shoulder pads or helmets should be worn during non contact parts of practice(
7 ex: stretching/warm up, sprints). If the heat index reaches 106F - or higher then practice will
8 only be allowed with executive board approval.
9

10 4. Only one practice per day not to exceed two hours of practice on any given day, there will be
11 no exceptions to this rule. *If a team is found in violation, the first offense will be a fine as set by*
12 *the Executive Board of Directors*
13

14 5. *The amount of contact allowed per practice and/or per week will fall in line with any rules*
15 *that the AHSAA puts in place.*
16

17 ***ANY COACH AND/OR PARK FOUND IN VIOLATION OF***
18 ***THESE PRACTICE RULES WILL BE SUBJECT TO***
19 ***IMMEDIATE SUSPENSION, FINE AND ANY OTHER***
20 ***PENALTY THAT IS DEEMED APPROPRIATE BY THE***
21 ***BOARD OF DIRECTORS.***
22

23
24 ***There will be no exceptions to the above rule. Failure to abide by this rule could result in***
25 ***dismissal of any coach or Member found to not being in compliance with JSYF.***
26

27
28 **K. BOWL – LEAGUE AND POST SEASON PLAY**
29

30 1. A JSYFL Championship will be held at the end of each season’s play. The two teams making
31 it through the playoffs will compete in this event, hereinafter, known as the JSYFL
32 Championship Bowl. The game will be played on the date specified and at the location specified
33 by the Board of Directors.
34

35
36 2. Divisions that split into 6A and 7A conferences will have separate playoffs with teams ranked
37 based on record against in-conference opponents.
38

39 3. JSYFL will have playoffs to determine the two teams that will play in the Championship
40 Bowl for each grade level. The Board of Directors will set the date when Playoffs will start. The
41 Board of Directors and member parks reserve the right to decide if 4 or 8 teams will qualify for
42 playoffs for each grade level.
43 .

44 4. If only 4 teams make the playoffs in a grade level then the following format will be used:

1
2
3
4
5
6
7
8
9
10
11
12
13
14
15
16
17
18
19
20
21

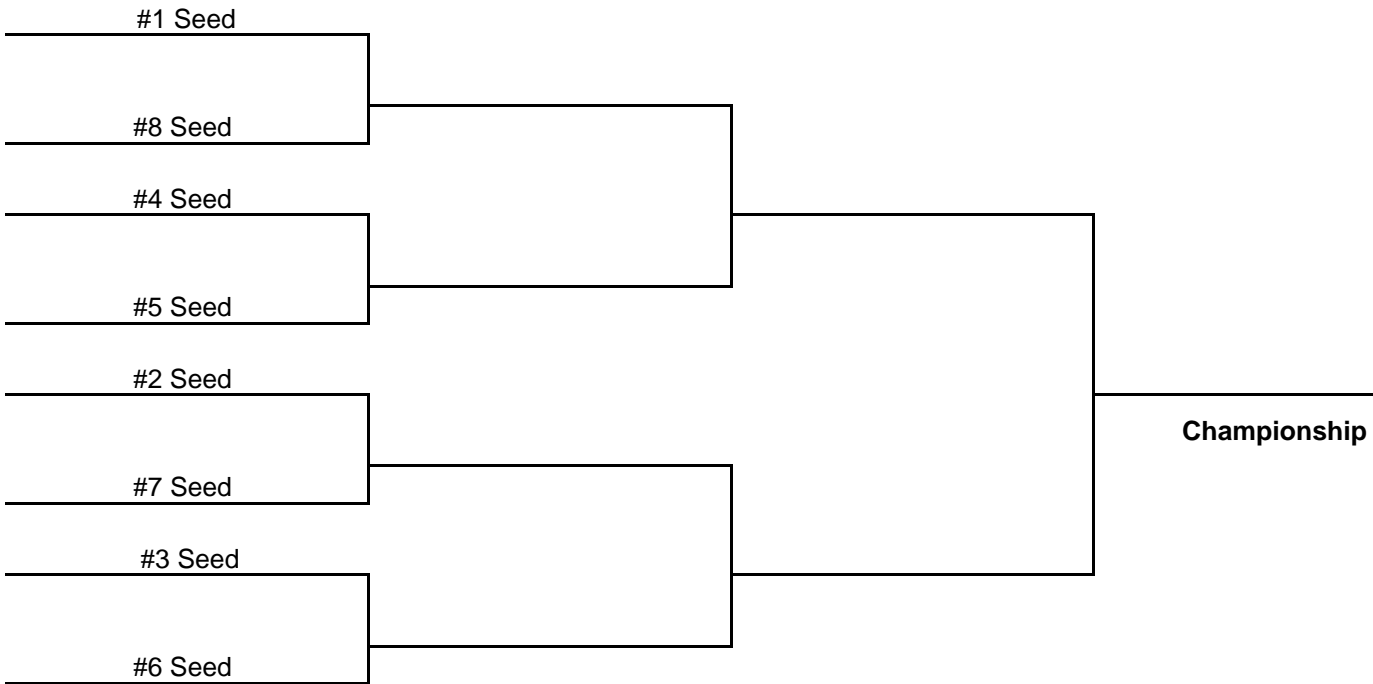
- a. The First place team in each grade level will play the Fourth place team.
- b. The Second place team in each grade level will play the Third place team.
- c. Highest place team is home team and playoff game will be played at their field if available.

If a tie during the regular season occurs, the following format will determine the pairings:

TIE BREAKER

- 1. Head-to-Head
- 2. Point Differential maximum 14 points per game
- 3. Record against teams who have already made the playoffs for the current season.
- 4. Coin Toss

5. If any grade level has 8 teams make the playoffs. The following playoff format will be used to determine what teams make the playoffs and what the match-ups will be.



22
23
24
25

TIE BREAKER

1
2
3
4
5
6
7
8
9
10
11
12
13
14
15
16
17
18
19
20
21
22
23
24
25
26
27
28
29
30
31
32
33
34
35
36
37
38
39
40
41
42
43
44
45
46

- 1. Head-to-Head**
- 2. Point Differential maximum 14 points per game**
- 3. Record against teams who have already made the playoffs for the current season.**
- 4. Coin Toss**

6. If a park is fined and any of their teams make the playoffs, their fine(s) must be paid before they can participate in playoff games. If they refuse to pay the fine(s) then they will forfeit the right to participate and the team behind them in the standings will take their place.

7. No other post-season activities will be scheduled to conflict with this bowl or any other JSYF sponsored post-season play.

SECTION IV – PROTEST

A. PROCEDURES

- 1. Whenever a matter of protest arises during a game, the Captain or the Coach of the protesting team will immediately notify the Head Official. The Head officials only duty in a protest is to notify the opposing coach and the official scorekeeper. The head coach of the protesting team will be responsible to notify their Board Representative and he/she notifies the President of JSYF that the game was played under protest. No points will be awarded until the protest is settled.
- 2. All protest must contain the following information:
 - a. Teams and weight division.
 - b. Date
 - c. Time
 - d. Place game played
 - e. Names of all Officials
 - f. Reason for protest and any supporting evidence
 - g. Score
 - h. Time of game (quarter)
 - i. Rule or section violated
 - j. A copy of the protest must be presented to the board at the next scheduled board meeting by the protesting parks representative.
 - k. A \$100.00 fee must accompany any protest and all protest must be in typewritten form. Money will remain in the treasury until the protest is satisfied. (The \$100.00 will be refunded only if the protest is won.)

- 1
2 3. Protests will be handled only if all the above outlined is met. Protests will be heard as
3 follows:
4
5 a. The Executive Board will hear the written protest and it will be discussed based
6 on the grounds of clarity and supporting evidence as presented by both parties
7 involved.
8 b. A general vote will be taken, and a 51% majority of the Executive Board will
9 decide the outcome. JSYF's decision is final. No further discussions will be
10 heard on the conflict.
11 c. All protest should be sent through the protest committee before coming to the
12 Executive Board for review. This committee should make sure the protest has
13 been written up correctly before an Executive Board decision can be made.

14 ***There will be no exceptions to the above guidelines. If at any time a rule or subject is not***
15 ***covered, JSYF Executive Board will make the final decision on the conflict.***
16

17 **SECTION V – OFFICIALS**

18 **A. OFFICIALS COORDINATOR**

19
20
21 He/She will be responsible for all officials. This will include the scheduling of officials at all
22 games. He/she will ensure all are qualified and are familiar to the rules of play JSYF plays
23 under the Alabama High School Association rules. Officials will be familiar with the additional
24 rules established by JSYF. A contract must be issued to the JSYF Board at the beginning of the
25 year stating cost per game (Jr. and Sr.) including play-offs and Championship games. If
26 officials wish to quit working with JSYF, they must give notice of current season and 1 year,
27 which will be considered sufficient notice for JSYF Board to respond. The JSYF Board of
28 Directors must approve this contract. Each game will have three (3) officials and one (1)
29 scorekeeper. If the officials do not show up, a fine will be levied by the JSYF.
30

31 **B. GAME OFFICIALS DUTIES:**

- 32
33 1. JSYF shall have only officials registered with the Alabama High School Athletic
34 Association and the fees to be paid shall be determined by contract from the Officials
35 Association and the JSYF Board.
36
37 2. Each individual organization will be responsible for the cost of the officials, and their
38 fees will be paid on the field, after the last scheduled game has been played that day. If
39 more than one set of three (3) officials is used, the officials leaving will be paid after the
40 last game they will call for the day.
41
42 3. Each park should keep a logbook or some type record of who the officials were and how
43 much they were paid.
44
45 4. All officials must complete a payment form before any park pays them. JSYF will
46 provide this form.
47

- 1 5. There will be three (3) officials at each game by JSYF decision.
2
3 6. Each park will have an official timekeeper certified by the Officials coordinator, no
4 exceptions.
5
6 7. The officials' coordinator of the association cannot officiate every championship game,
7 but must be there to observe his/her crew in case something happens or is needed.
8

9 **C. JEFFERSON-SHELBY YOUTH FOOTBALL UMPIRES ASSOCIATION**

10
11 It is the responsibility of the Park Representative to inform the Booking Agent of canceled or
12 non-payable games. (If officials report, single game rate will be paid.)
13 See the attached rate sheet.